

Installing Crystal Reports

This guide shows you how to install Crystal Reports locally from your product distribution. It also describes how to install from a network server to a workstation machine.

Installing Crystal Reports

The Crystal Reports Installation Wizard works with Microsoft Windows Installer to guide you through the installation process. The Installation Wizard automatically recognizes your computer's operating system and updates files as required.

This chapter provides step-by-step instructions for installing Crystal Reports and shows how to customize your installation. The main topics are:

- [Installation requirements](#)
- [Installing Crystal Reports on a local machine](#)
- [Creating an installation point and installing from a network server](#)
- [Customizing your installation](#)
- [Installing the Java Reporting Component](#)
- [Upgrading Crystal Reports components](#)

As one of the final steps in the installation process, you'll be asked if you want to register the product. Follow the on-screen instructions to complete this process.

Installation requirements

Minimum installation requirements

Operating Systems	Windows 2000 Windows XP Professional Windows 2003 Server
Computer/Processor	133 MHz or higher Pentium-compatible CPU
Memory	At least 128 megabytes (MB) of RAM. 256 MB recommended. 4 gigabytes (GB) maximum
Disk space	320 Megabytes
Drive	CD-ROM or DVD drive

Installing Crystal Reports on a local machine

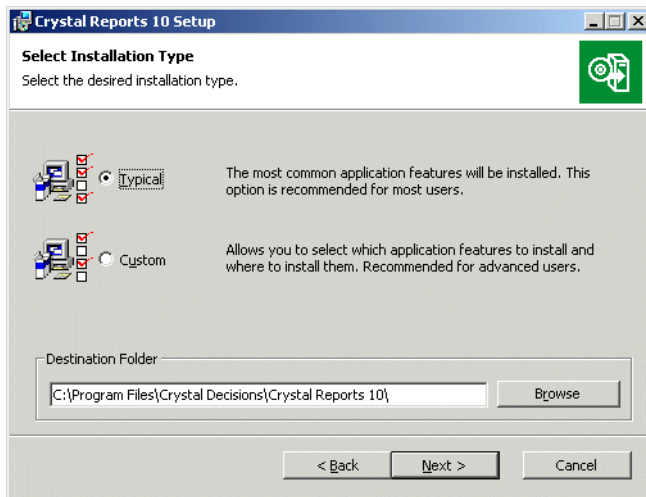
If you are installing Crystal Reports on a computer running any of the supported operating systems (see [Minimum installation requirements](#) above), you must have Administrator privileges. The installation process creates registry entries and may update some system files that require Administrator rights.

Close all currently running programs and stop as many services as possible when installing Crystal Reports.

If you want to limit the features you install, see [“Customizing your installation” on page 6](#).

To install on a local machine

- 1 Unless Autoplay is enabled for your CD-ROM drive, run **setup.exe** from the win32 directory of your product distribution.
Note: Depending on the configuration of your current system, you may receive a dialog box informing you to update existing files. If this happens, click Yes and restart your machine. The Installation Wizard updates the required files.
- 2 Read and accept the License Agreement to proceed with the installation.
- 3 In the User Information dialog box, type your name, organization, and the product activation keycode.
- 4 Click **Next**.
 The Select Installation Type dialog box appears.



- 5 Choose the type of installation that you want to perform:
 - **Typical** installs the most common application features.
 - **Custom** enables you to choose the features that you want installed, to specify where they will be installed, and to check the disk space required by each feature. For details, see [“Customizing your installation” on page 6](#).
- 6 Click **Browse** if you want to install Crystal Reports to a directory different from the default location.
 The default is C:\Program Files\Crystal Decisions\Crystal Reports 10\
- 7 Click **Next**.
 The Start Installation dialog box appears.
- 8 Click **Next** to begin copying files to your local drive.

Creating an installation point and installing from a network server

Installing Crystal Reports from a central network location involves two steps:

- 1 Make a copy of your Crystal Reports product distribution on a server machine on the network (this copy becomes your installation point). See “[Creating an installation point for Crystal Reports](#)” on page 4.
- 2 Access the server machine from a workstation, and run Setup.exe to install Crystal Reports on the workstation. See “[Installing Crystal Reports from a network](#)” on page 4.

Creating an installation point for Crystal Reports

This procedure must be performed by a network administrator who has write access and network privileges. When this procedure is complete, end users will be able to access Setup.exe from the network to install Crystal Reports onto their local machines.

Note: If users do not have the Microsoft Windows Installer configured on their machines, the setup process detects the workstation’s operating system and installs the appropriate Microsoft Windows Installer package.

To create an installation point

- 1 Create a folder on your network, and share this folder for the users who need to run the setup.exe.
- 2 Copy the entire contents of your Crystal Reports product distribution to the folder that you created in step 1.
- 3 Assign rights to the users who need to install Crystal Reports from this folder.
Note: Restricting access to this folder lets you stay within your license limit.

Installing Crystal Reports from a network

If your network administrator has copied Crystal Reports to the network, make sure you have read privileges to that network before beginning this process.

If you are installing Crystal Reports on a computer running any of the supported operating systems (see “[Minimum installation requirements](#)” on page 2), you must have Administrator privileges on the computer. The installation process creates registry entries and may update some system files that require Administrator rights.

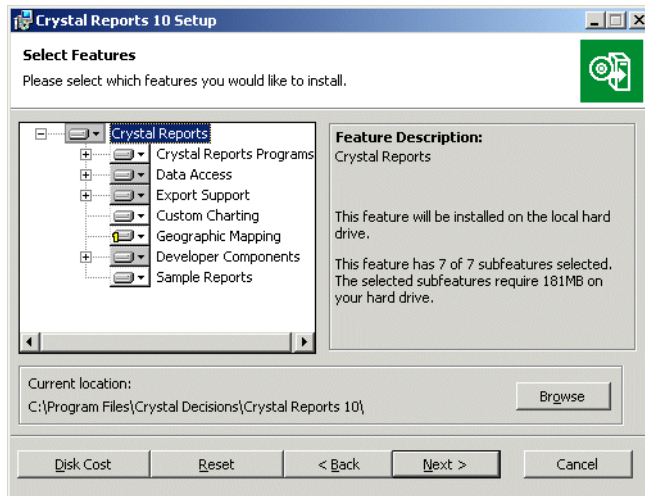
Close all currently running programs and stop as many services as possible when installing Crystal Reports.

To install Crystal Reports from a network

- 1 Access the folder on the network that contains the Crystal Reports installation files.
- 2 Double-click **Setup.exe**.
Note: Depending on the configuration of your current system, you may receive a dialog box informing you to update existing files. Click Yes and restart your machine. The Installation Wizard updates the required files.
- 3 Read and accept the License Agreement to proceed with the installation.
- 4 In the User Information dialog box, type your name, organization, and the product activation keycode.
Tip: You may need to contact your Administrator for the product activation keycode.
- 5 Click **Next**.
The Select Installation Type dialog box appears.
- 6 Choose the type of installation that you want to perform:
 - **Typical** installs the most common application features.
 - **Custom** enables you to choose the features that you want installed, to specify where they will be installed, and to check the disk space required by each feature. For details, see “[Customizing your installation](#)” on page 6.
- 7 Click **Browse** if you want to install Crystal Reports to a directory different from the default location.
The default is C:\Program Files\Crystal Decisions\Crystal Reports 10\
- 8 Click **Next**.
The Start Install dialog box appears.
- 9 Click **Next** to begin copying files to your local drive.

Customizing your installation

Selecting the Custom installation option invokes the Select Features dialog box, which allows you to install specific features, to change the default location of various features, and to check the amount of disk space required by each feature.



The icons in the feature tree indicate whether the feature and its subfeatures will be installed or not:

- A white icon means that the feature and all its subfeatures will be installed.
- A shaded icon means that the feature and some of its subfeatures will be installed.
- A yellow 1 means that the feature will be installed when required (installed on demand).
- A red X means that the feature or subfeature is either unavailable or will not be installed.

Crystal Reports uses an “install on-demand” technology for some of its features. As a result, the very first time a particular feature is used after being installed, there may be an extra wait for the “install on-demand” to complete. This behavior will affect new installations only once and will not occur when features are restarted.

To select the configuration and location of a feature or subfeature, click its icon.

Note: Each feature or subfeature can have its own configuration and location.

Use the following table to determine your installation options for each feature or subfeature:

Type of feature installation	Description of what is installed
Will be installed on local hard drive	<ul style="list-style-type: none"> Installs the feature on the local hard drive. Uses the Typical install settings to install some of the feature's subfeatures to the local hard drive.
Entire feature will be installed on local hard drive	<ul style="list-style-type: none"> Installs the feature and all of its subfeatures on the local hard drive.
Will be installed to run from product distribution/network	<ul style="list-style-type: none"> Runs the feature and its Typical subfeatures off the product distribution/network. <p>Note: Some subfeatures are not set up to run from the product distribution/network. These subfeatures will be installed on your local hard drive.</p>
Entire feature will be installed to run from product distribution/network	<ul style="list-style-type: none"> Runs the feature and all of its subfeatures off the product distribution/network. <p>Note: Some subfeatures are not set up to run from the product distribution/network. These subfeatures will be installed on your local hard drive.</p>
Feature will be installed when required	<ul style="list-style-type: none"> Installs the feature or subfeature from the product distribution/network when first used.
Entire feature will be unavailable	<ul style="list-style-type: none"> Neither the feature nor its subfeatures are installed.

Note: Subfeatures are listed below each feature. A subfeature can have a different type of installation than its parent feature.

Installing the Java Reporting Component

Crystal Reports 10 introduces a Java version of the powerful Crystal Reports reporting engine. The Java Reporting Component takes full advantage of Java's portability across operating systems and hardware platforms. It also provides a fast, codeless way for developers to connect to data and to design dynamic, high-fidelity presentation layers for J2EE applications.

The Java Reporting Component is provided with the Developer and Advanced Developer distributions of Crystal Reports 10. The version of the Java Reporting Component files that you need varies, depending on the integrated development environment (IDE) that you are using.

Borland JBuilder 10

The Java Reporting Component is bundled with some editions of Borland JBuilder 10. The latest version of the Java Reporting Component for JBuilder is also provided with the Developer and Advanced Developer distributions of Crystal Reports 10.

To install Crystal Reports for Borland JBuilder on Windows

- 1 Run **CR10_Autorun_ENENT.exe** from the Crystal Reports product distribution.
- 2 Click **Add Java Components**.
- 3 Click **Crystal Reports for Borland JBuilder**, and follow the instructions on the screen.

Crystal Reports for Borland JBuilder is installed. The jar files for Crystal Reports for Borland JBuilder are found in C:\Program Files\Common Files\Crystal Decisions\2.5\java\lib.

To install Crystal Reports for Borland JBuilder on Solaris or Linux

- 1 At a command prompt, change your current directory to the Crystal_Report_Java_Components/IDE_Integration/Borland_JBuilder/*platform*/NoVM directory in the Crystal Reports product distribution (where *platform* is either Solaris or Linux).
 - 2 Run `install.bin`, and follow the instructions on the screen.
- Crystal Reports for Borland JBuilder is installed. The jar files for Crystal Reports for Borland JBuilder are found in \$HOME/Crystal Reports for Borland JBuilder/java/lib.

BEA Weblogic Workshop 8.1 SP2

The Java Reporting Component is bundled with some editions of BEA Weblogic Workshop 8.1 SP2. The latest version of the Java Reporting Component for BEA Weblogic Workshop is also provided with the Developer and Advanced Developer distributions of Crystal Reports 10.

To install Crystal Reports for BEA Weblogic Workshop on Windows

- 1 Run **CR10_Autorun_ENENT.exe** from the Crystal Reports product distribution.
- 2 Click **Add Java Components**.

- 3 Click **Crystal Reports for BEA Weblogic Workshop**, and follow the instructions on the screen.

Crystal Reports for BEA Weblogic Workshop is installed. The jar files for Crystal Reports for BEA Weblogic Workshop are found in C:\Program Files\Common Files\Crystal Decisions\2.5\java\lib.

To install Crystal Reports for BEA Weblogic Workshop on Linux

- 1 At a command prompt, change your current directory to the Crystal_Report_Java_Components/IDE_Integration/BEA_WLW\Linux/NoVM directory in the Crystal Reports product distribution.
 - 2 Run `install.bin`, and follow the instruction on the screen.
- Crystal Reports for BEA Weblogic Workshop is installed. The jar files for Crystal Reports for BEA Weblogic Workshop are found in \$HOME/Crystal Reports for BEA Weblogic Workshop/java/lib.

All other Integrated Development Environments

For all other integrated development environments (including development with text editors), a standalone version of the Crystal Reports 10 Java Reporting Component is provided with the Developer and Advanced Developer distributions of Crystal Reports 10.

To install Crystal Reports 10 Java Reporting Component on Windows

- 1 Run `CR10_Autorun_ENENT.exe` from the Crystal Reports product distribution.
- 2 Click **Add Java Components**.
- 3 Click **Crystal Reports 10 Java Reporting Component**, and follow the instructions on the screen.

Crystal Reports 10 Java Reporting Component is installed. The jar files for the Java Reporting Component are found in C:\Program Files\Common Files\Crystal Decisions\2.5\java\lib.

To install Crystal Reports 10 Java Reporting Component on Solaris or Linux

- 1 At a command prompt, change your current directory to the Crystal_Report_Java_Components/*platform*/NoVM directory in the Crystal Reports product distribution (where *platform* is either Solaris or Linux).
 - 2 Run `install.bin`, and follow the instructions on the screen.
- Crystal Reports 10 Java Reporting Component is installed. The jar files for the Java Reporting Component are found in \$HOME/Crystal Reports Java Reporting Component/java/lib.

Upgrading Crystal Reports components

If you have purchased an upgrade product activation keycode, you will find that the installation program does not remove your previous version of Crystal Reports. In general, upgrading Crystal Reports components provides you with a side-by-side installation (that is, an installation in which you can run either your old or new version of Crystal Reports).

Note: Crystal Reports 10 side-by-side installation is supported when upgrading from Crystal Reports 9 or Crystal Reports 8.5.

This side-by-side behavior applies to Crystal Reports and the various Software Development Kits (SDKs). Crystal Reports 10 for Visual Studio .NET can be used in side-by-side mode at runtime (that is, applications written using Crystal Reports 9 for Visual Studio .NET will continue to run with Crystal Reports 9 for Visual Studio .NET assemblies). However, Visual Studio integration is not side by side; only one version of Crystal Reports can be integrated into the Visual Studio .NET IDE at any given time. The same thing applies to the Report Designer Component (RDC): the RDC can be used in side-by-side mode at runtime, but IDE integration is not side by side.

Note:

- When you upgrade Crystal Reports 9 components, the Crystal Repository presents a special case. You must install the Crystal Repository from the Crystal Enterprise Standard product distribution (see the *Crystal Enterprise 10 Installation Guide* for information). You must then move repository content that you added in Crystal Reports 9 to the new repository. See the chapter called “Migrating the Crystal Repository” in the *Business Views Administrator’s Guide* for information about how to do this.
- For further information that may pertain to your reporting environment, consult the Release Notes included with your product distribution ([release.htm](#)).